

NEW ITEMS OF INTEREST

05/10/21

- Awaiting Connection

NEW ITEMS OF INTEREST

05/10/21

Add the £ sign to your passwords

- Further to your news story on using three random words being safer than “complex” passwords, the following trick adds an extra level of security
- Add a £ sign between, before and after those random words
- The reason is simple: the UK is the only country that uses this sign, and password-cracking software finds it hard to decipher.

For example

Implore£rhubarb£fraction

NEW ITEMS OF INTEREST

05/10/21

Alternatives connections to terrestrial

Amazon Firestick



NEW ITEMS OF INTEREST

05/10/21

Firestick Front Page



NEW ITEMS OF INTEREST

05/10/21

Startup Folder

Unwanted app starting on boot up

- Startup Folder - v - Settings App
- To stop apps from starting when you sign in, you should probably use the Startup Apps screen in Windows 10's Settings app. This is where you can toggle on or off apps that want to run at startup.
- It works well and shows some apps that won't appear in the Startup folders, but you can still access them.
- For example, if you want to make an application start every time you sign into your computer, you can add a shortcut to it to the Startup folder.

NEW ITEMS OF INTEREST

05/10/21

Find a setting

Apps

Apps & features

Default apps

Offline maps

Apps for websites



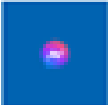


Video playback

Startup

Startup Apps

Apps can be configured to start when you log in. In most cases apps will start minimized or may only start a background task.

Sort by: Name ▾

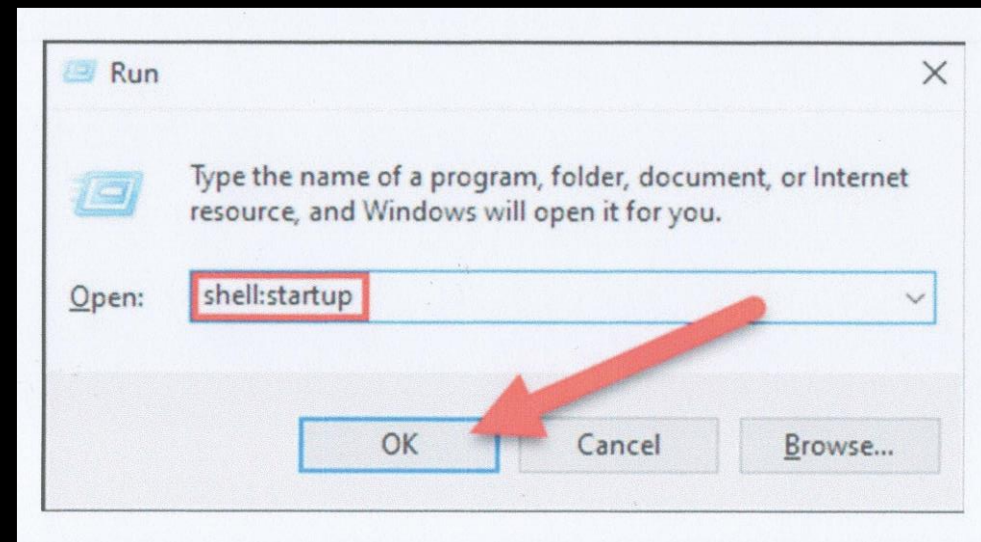
	<div>AquaSnap daemon</div> <div>Nurgo Software</div>	<input checked="" type="checkbox"/>	On	High impact
	<div>Cortana</div> <div>Microsoft Corporation</div>	<input type="checkbox"/>	Off	No impact
	<div>Messenger</div> <div>Facebook Inc</div>	<input type="checkbox"/>	Off	No impact
	<div>Realtek HD Audio Universal Service</div> <div>Realtek Semiconductor</div>	<input checked="" type="checkbox"/>	On	Not measured
	<div>Clock</div>	<input type="checkbox"/>	Off	

NEW ITEMS OF INTEREST

05/10/21

How to Open the Startup Folder

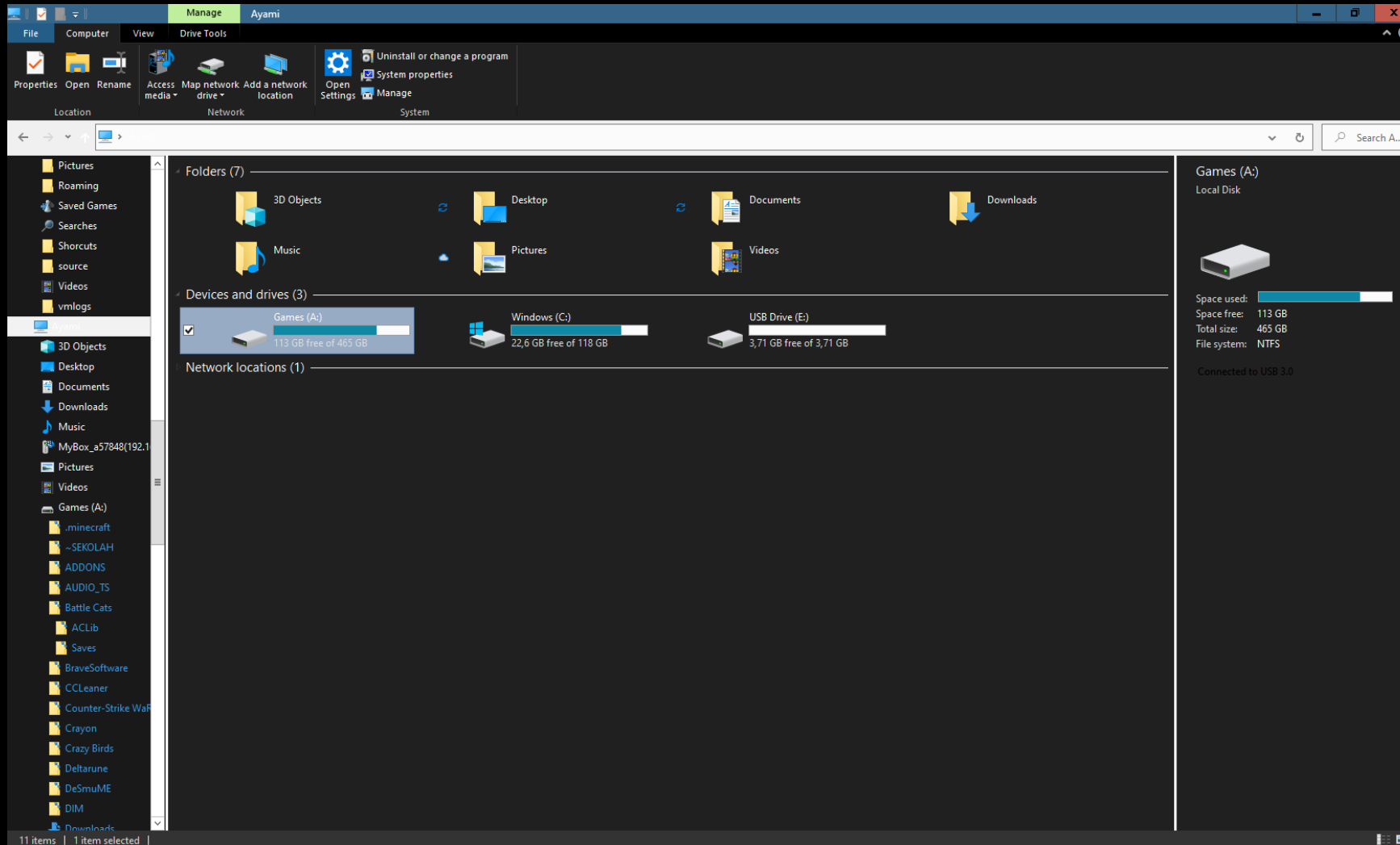
- There are two locations you'll need to know to find the "Startup" folder.
- One is for determining the apps that start up on your personal account, the other is for all users
- Programs that are put in these folders will launch when the PC is started.
- In general, you'll want to put shortcuts in this folder, not EXE files.
- To get started, use the Windows + R keyboard shortcut to open the Run menu.
- Type one of the following in the box and press Enter or click "OK."
- Personal User Path: *shell:startup*
- All Users Path: *shell:common startup*



NEW ITEMS OF INTEREST

05/10/21

- Opens Explorer and you can create shortcut and paste it into that folder





"That's all Folks!"